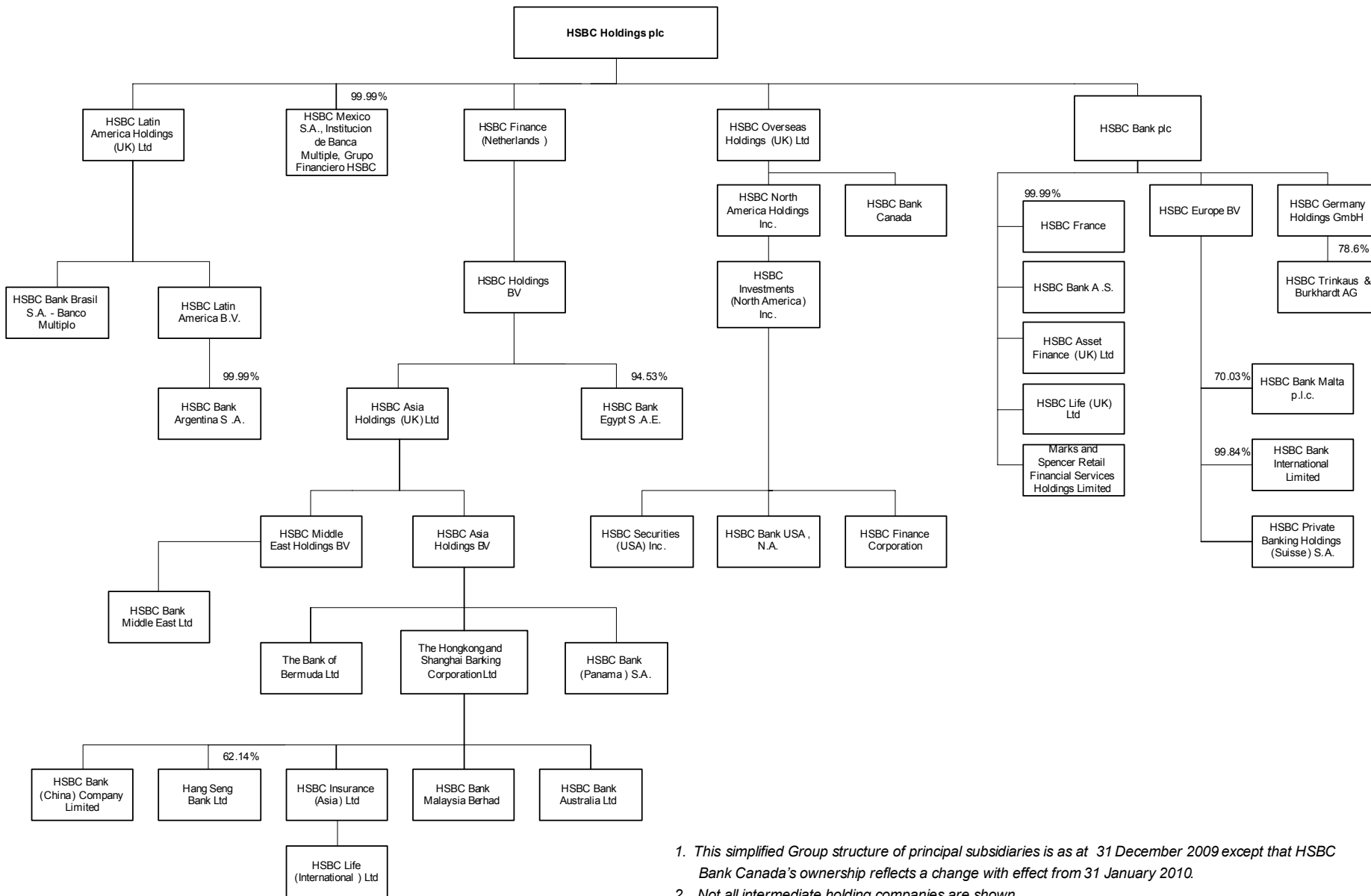


Simplified Structure Chart of HSBC Holdings plc



1. This simplified Group structure of principal subsidiaries is as at 31 December 2009 except that HSBC Bank Canada's ownership reflects a change with effect from 31 January 2010.
2. Not all intermediate holding companies are shown.
3. Unless shown otherwise, all subsidiaries are wholly owned.